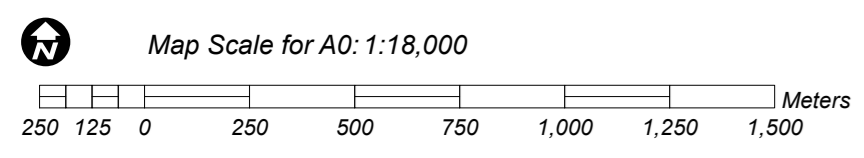


TRIPOLI SATELLITE REFERENCE MAP

This poster size satellite overview map provides baseline geographic information over Tripoli, Libya. It is produced by UNITAR/UNOSAT in support of international humanitarian assistance to the people of Libya. The atlas is created to respond to the needs of UN agencies and their partners. It is intended to provide objective geographic information and has been designed for easy printing and readability for A0 and A1 posters.

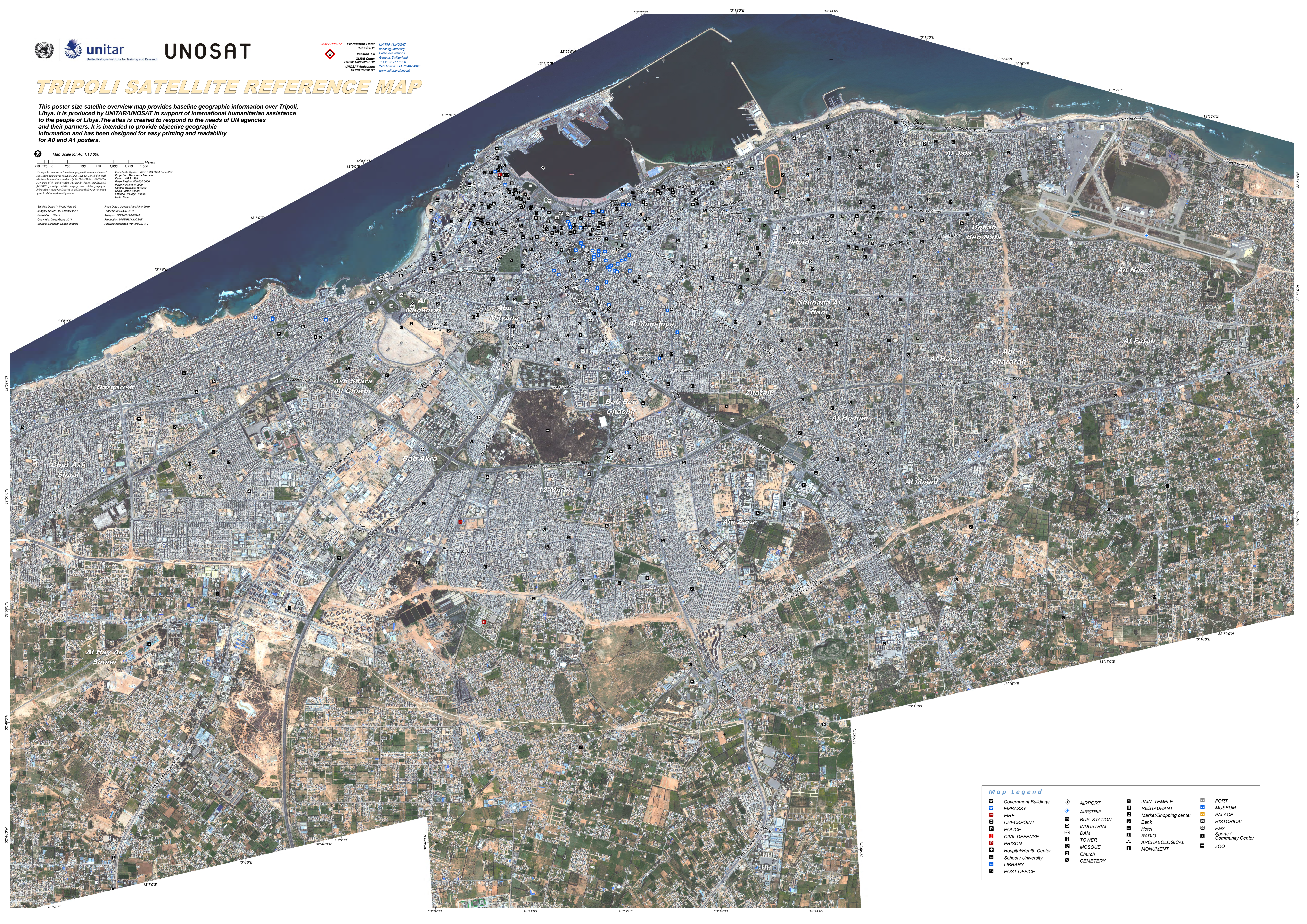


The depiction and use of boundaries, geographic names and related information on this map are not necessarily endorsed by the United Nations. UNOSAT is a project of the United Nations Institute for Training and Research (UNITAR) providing satellite imagery and related geographic information services and products to UN humanitarian and development agencies and their operational partners.

Satellite Data (1): WorldView-2
 Imagery Date: 20 February 2011
 Resolution: 30 cm
 Copyright: DigitalGlobe 2011
 Source: European Space Agency

Road Data: Google Map Maker 2010
 Other Data: USGS, NOAA
 Analysts: UNITAR/UNOSAT
 Production: UNITAR/UNOSAT
 Always conducted with ArcGIS v10

UNITAR/UNOSAT
 Production Date: 02/02/2011
 Version 1.0
 GLIDE Code: 07-0011-0000054-017
 UNOSAT Activation: 24/7 hotline: +41 76 487 4998
 www.unitar.org/unosat



Map Legend			
	Government Buildings		AIRPORT
	EMBASSY		AIRSTRIP
	FIRE		BUS_STATION
	CHECKPOINT		INDUSTRIAL
	POLICE		DAM
	CIVIL DEFENSE		TOWER
	PRISON		MOSQUE
	Hospital/Health Center		Church
	School / University		CEMETERY
	LIBRARY		JAIN_TEMPLE
	POST OFFICE		RESTAURANT
			Market/Shopping center
			Bank
			Hotel
			RADIO
			ARCHAEOLOGICAL
			MONUMENT
			FORT
			MUSEUM
			PALACE
			HISTORICAL
			Park
			Sports / Community Center
			ZOO