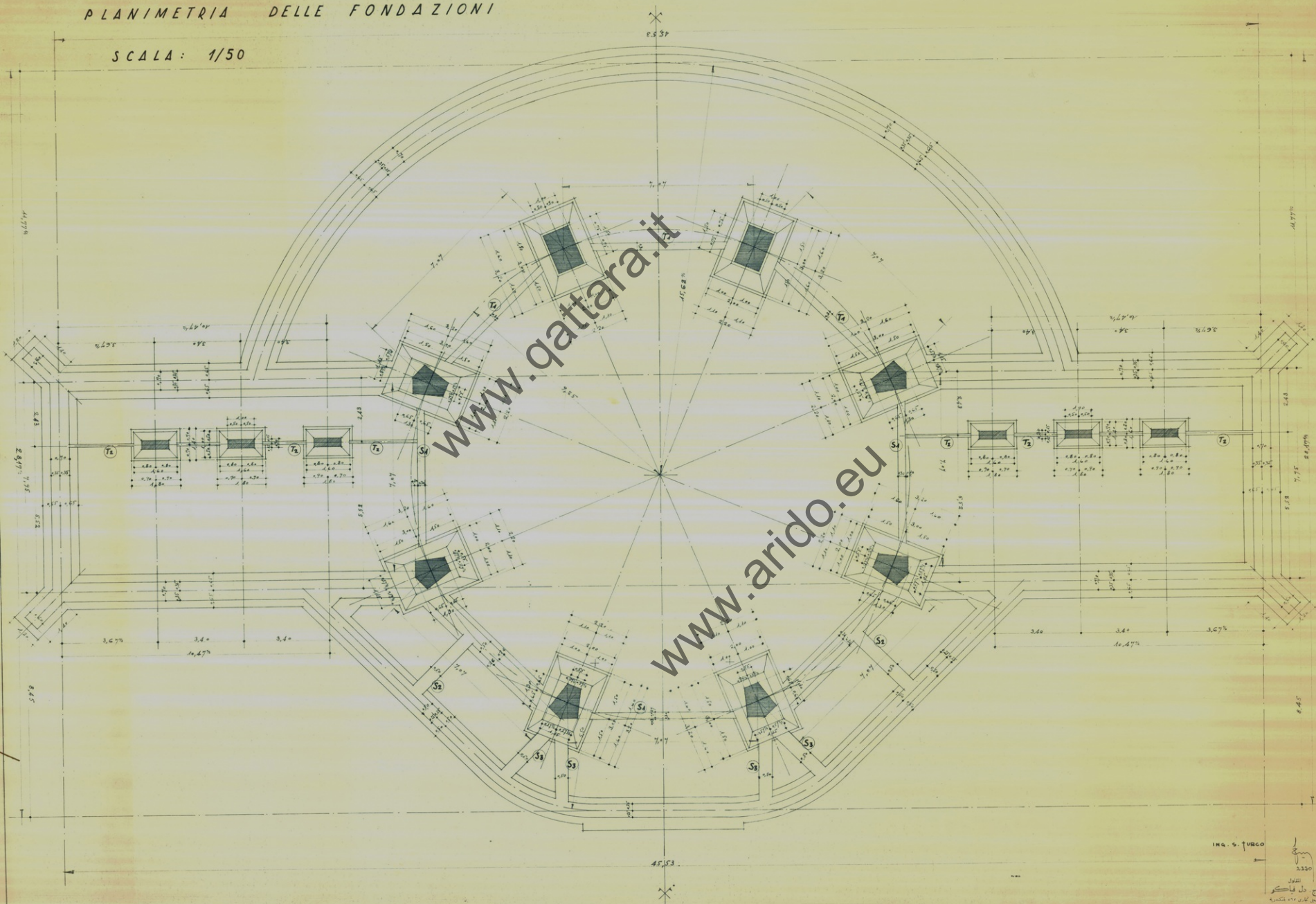


SACRARIO ITALIANO DI EL ALAMEIN  
PLANIMETRIA DELLE FONDAZIONI

SCALA: 1/50



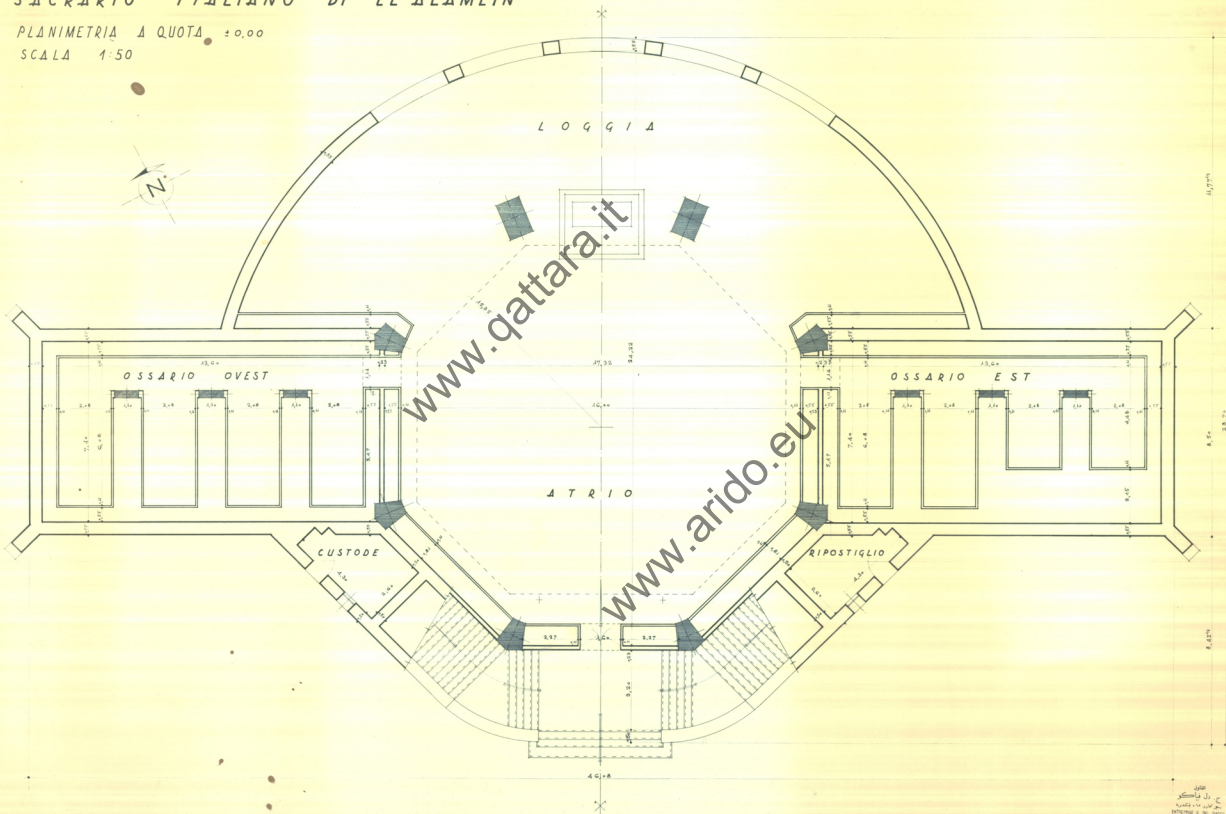
ING. S. TURCO

3.350  
ENTREPRISE S. DES PAGES  
R. 2.547 - N. 2.548

# SACRARIO ITALIANO DI EL ALAMEIN

PLANIMETRIA A QUOTA ±0,00

SCALA 1:50

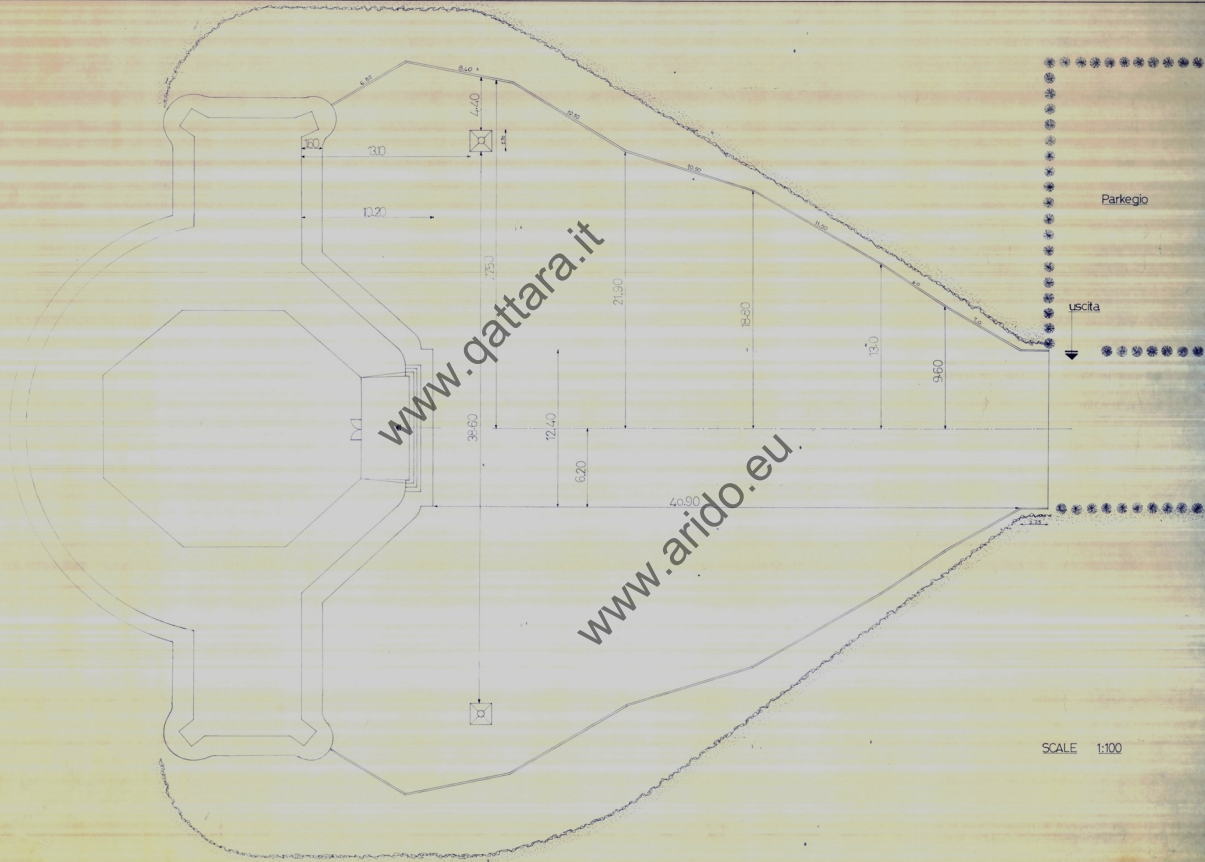


www.qattara.it  
www.arido.eu

اسم  
رحمہ اللہ  
میتھیو جی. ڈی. ڈی. ڈی.  
میتھیو جی. ڈی. ڈی. ڈی.  
میتھیو جی. ڈی. ڈی. ڈی.

[www.gattara.it](http://www.gattara.it)

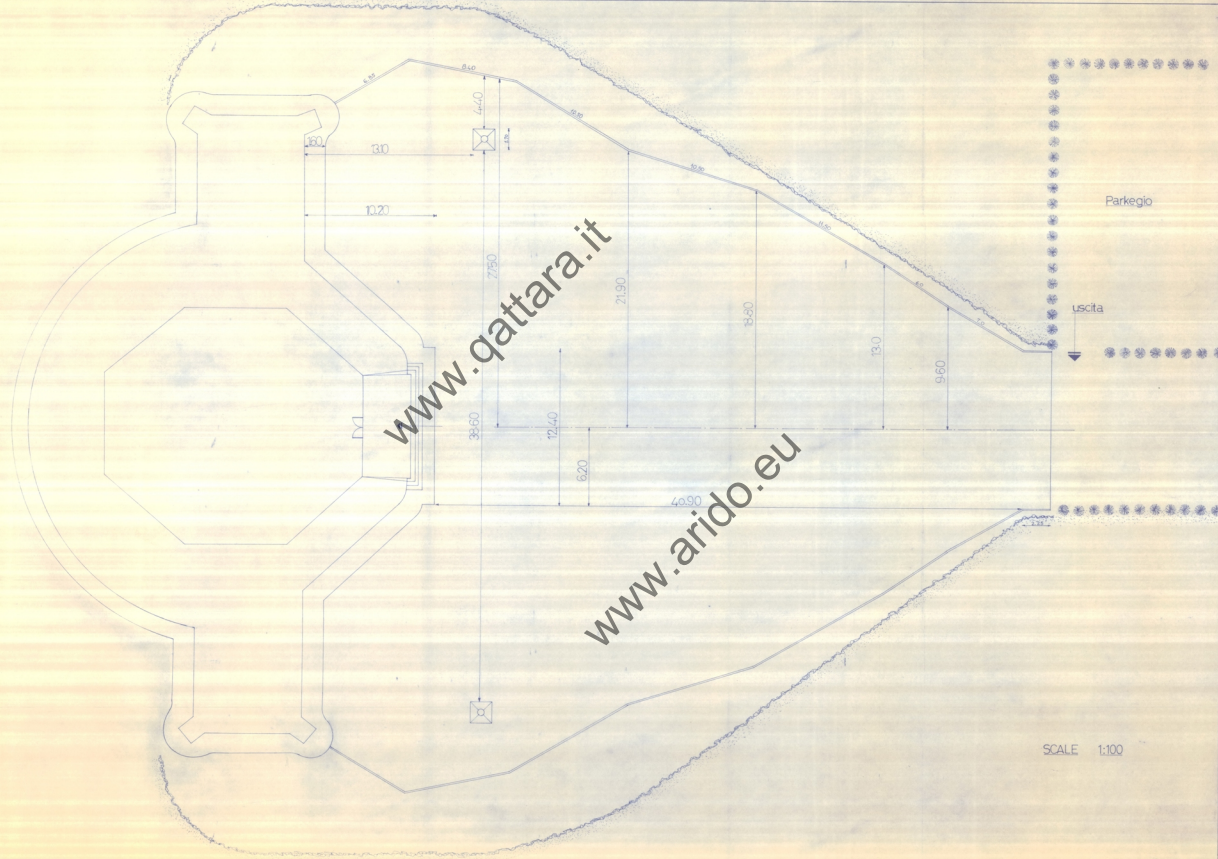
[www.arido.eu](http://www.arido.eu)



SCALE 1:100

[www.gattara.it](http://www.gattara.it)

[www.arido.eu](http://www.arido.eu)



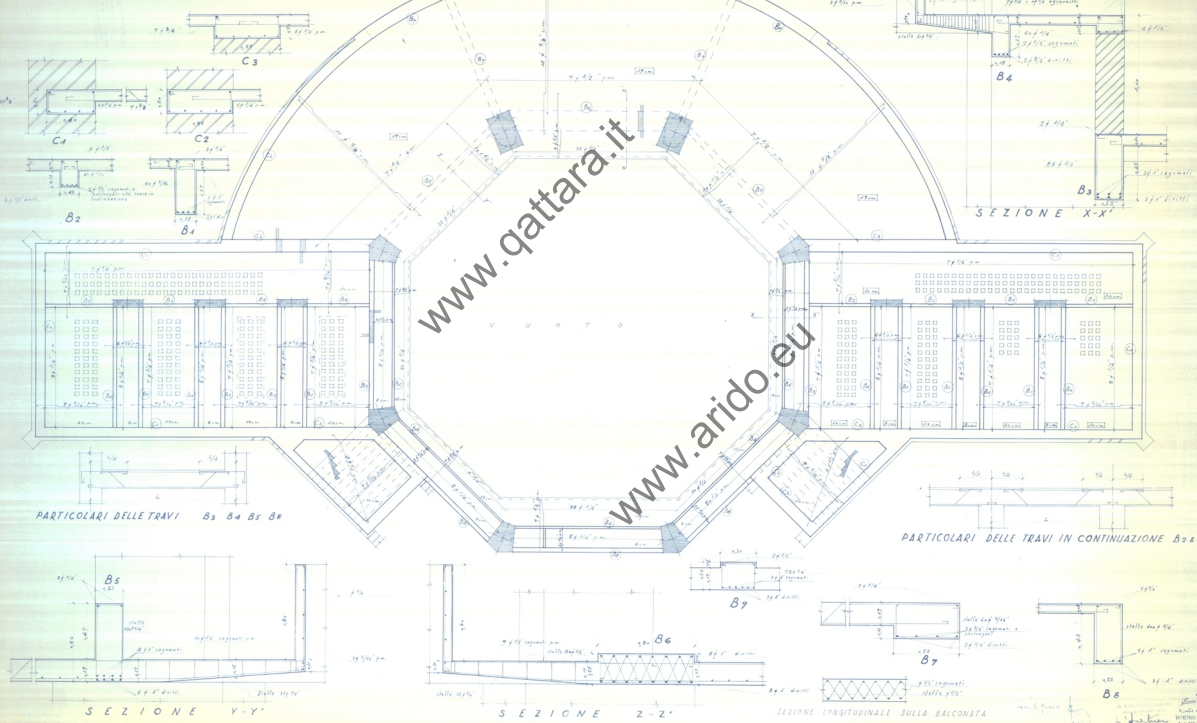
SCALE 1:100

# SACRARIO ITALIANO DI EL ALAMEIN

CEMENTI ARMATI DEL 1° SOLAIO

SCALA : 1/50 & 1/10

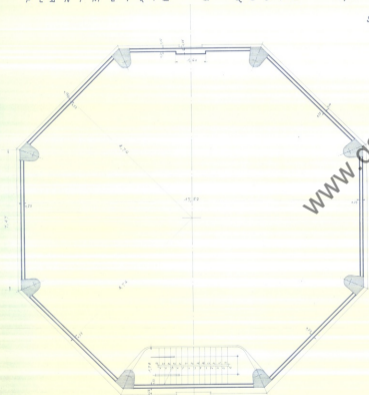
7



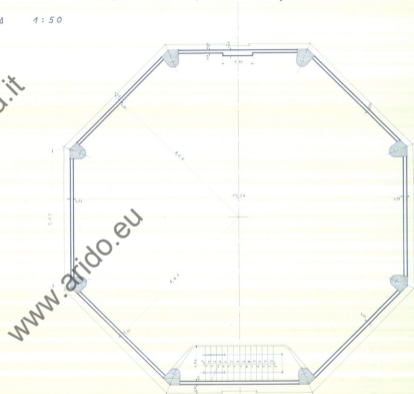
SACRARIO ITALIANO DI EL ALAMEIN

PLANIMETRIA A QUOTA + 10,24

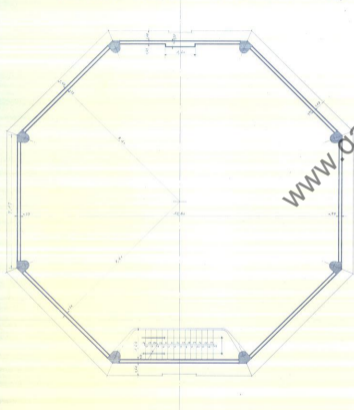
SCALA 1:50



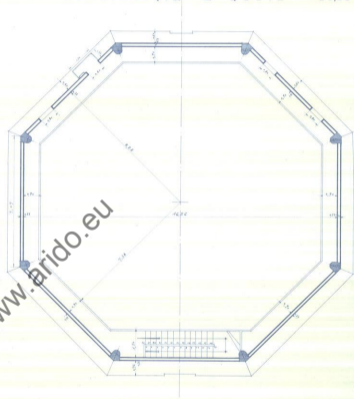
PLANIMETRIA A QUOTA + 14,18



PLANIMETRIA A QUOTA +22,06

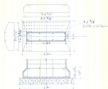


PLANIMETRIA A QUOTA +26,00

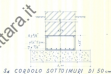


PROGETTO  
E. DIETTERICH  
ARCHITETTO  
P. DIETTERICH  
INGEGNERE  
P. DIETTERICH  
INGEGNERE

SACRARIO ITALIANO DI EL ALAMEIN  
 PARTICOLARI DEL CEMENTO ARMATO DELLE FONDAZIONI  
 SCALA: 1/20 e 1/10



F1 BASI & PILASTRI DELL'OSARIO



S1 COGLOLO SOTTOI MURI DI 50cm



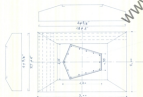
S2



S3



T1



F2 BASI & PILASTRI DELLA TORRE



S4 COGLOLO SOTTOI MURI DI 50cm



S5



T2



F1



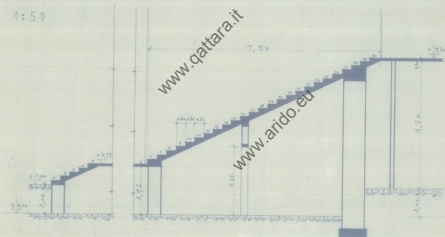
Handwritten notes and signatures at the bottom right of the page, including a date and a signature.



# SACRARIO ITALIANO DI EL ALAMEIN

## SEZIONE SULLE SCALE ESTERNE LATO EST

SCALA 1:50

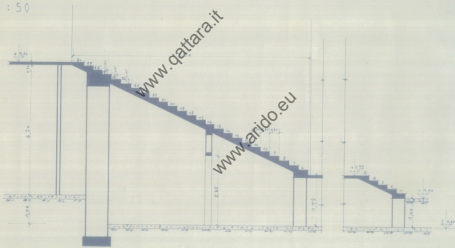


ج. دل نياكو  
محل تجاري - 1000 بلكندريه  
ENTREPRISE S. DEL PASCO  
R. C. 007 ALEXANDRIA

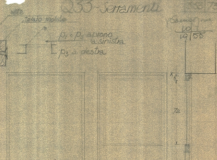
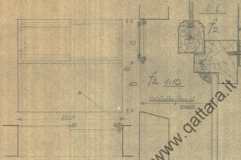
SACRARIO ITALIANO DI EL ALAMEIN

SEZIONE SULLE SCALE ESTERNE LATO OVEST

SCALA 1:50



القاول  
ج. دل قياكو  
محل كبرى ١٩٠٠ - اسکندرية  
ENTREPRISE E DEL PADO  
R. C. 047 - ALEXANDRIE



Dimensioni mm  
107  
107/55

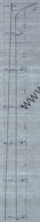
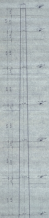
www.qattara.it

www.arido.eu

disponibile azione - oppure il  
avere già completi e installati sul muro

P4 135





www.gattara.it  
 www.arido.eu

SEZIONE A-A 1.00

SEZIONE B-B 1.00

P. 2.00

P. 6.00

P. 10.00

PROGETTO  
 ARCHITETTURA  
 INTERIORE  
 E  
 PIANIFICAZIONE

136

Rilievo  
25.12.85

h. 18 del 19.6.84

www.gattara.it

www.arido.eu

Meridiano locale ↗

10



11

12

13

14

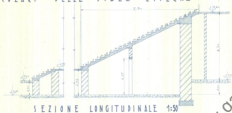
15

16

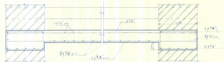
17

B

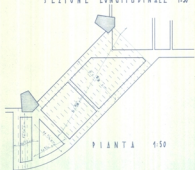
SACRARIO ITALIANO DI EL ALAMEIN  
PARTICOLARI DELLE SCALE ESTERNE



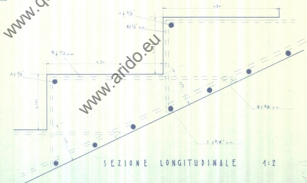
SEZIONE LONGITUDINALE 1:50



SEZIONE MEDIA 1:10



PIANTA 1:50



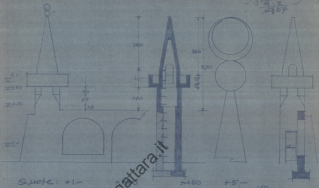
SEZIONE LONGITUDINALE 1:2

www.qattara.it

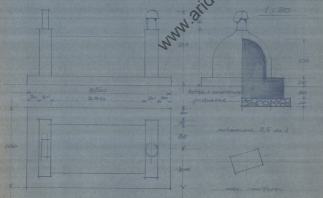
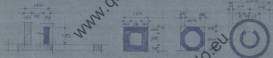
www.arido.eu

www.qattara.it  
www.arido.eu

1/20  
1/50



Quote: +1.-



colore cementino  
piedraone

colorazione 3.5 da 1



colore cementino

125  
145

